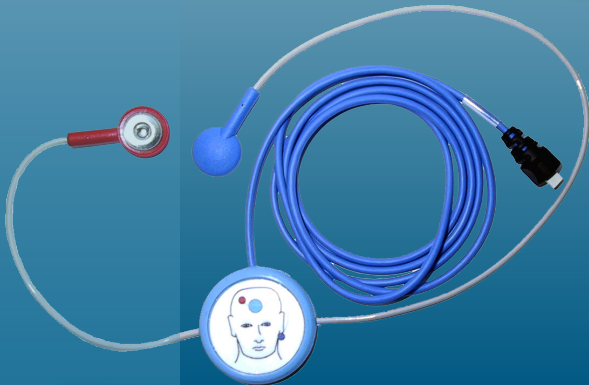


Ambulatory EEG Recording & Sleep Quality



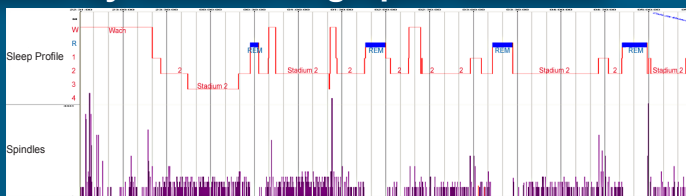
EEG Sensor:

Only three disposable electrodes!

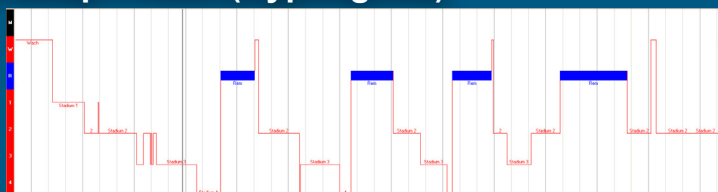
- Recording duration up to 11 days
- Sampling rate up to 256 Hz
- Recording of Body Position & Movement
Automatic PLM & Movement Analysis possible
- Ambient Light

SOMNOwatch™ plus EEG

- ▶ Automatic Spindle / K-Complex / Arousal Detection
- ▶ Full frequency band for sleep quantification
- ▶ Easy detection of light and slow wave sleep*
- ▶ REM detection by absence of grapho-elements

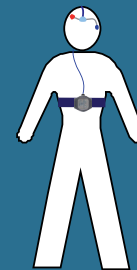


- ▶ Automatic Sleep Profile (Hypnogram)



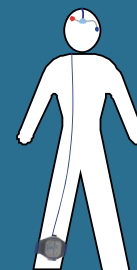
- ▶ Long Term EEG

Easy Application:



**EEG + Actigraphy
Body Position**

Application on
thorax & head



EEG + PLM:

Application on
ankle & head



**EEG + Actigraphy
(Movement Disorders)**

Application on
wrist & head