

## THE EASIEST WAY TO PREDICT THE FUTURE OF SLEEP DIAGNOSTICS IS TO INVENT IT.

### Intelligent Connect

Automatic sensor & electrode recognition – making montages a thing of the past

### Excellent signal quality

PSG System with a maximum of 70 channels, up to 4 kHz/channel, 24 bit EXG resolution

### HD touch screen

Allows PC independent set-up, bio-calibration & impedance check at the bedside



### Small & Compact Design

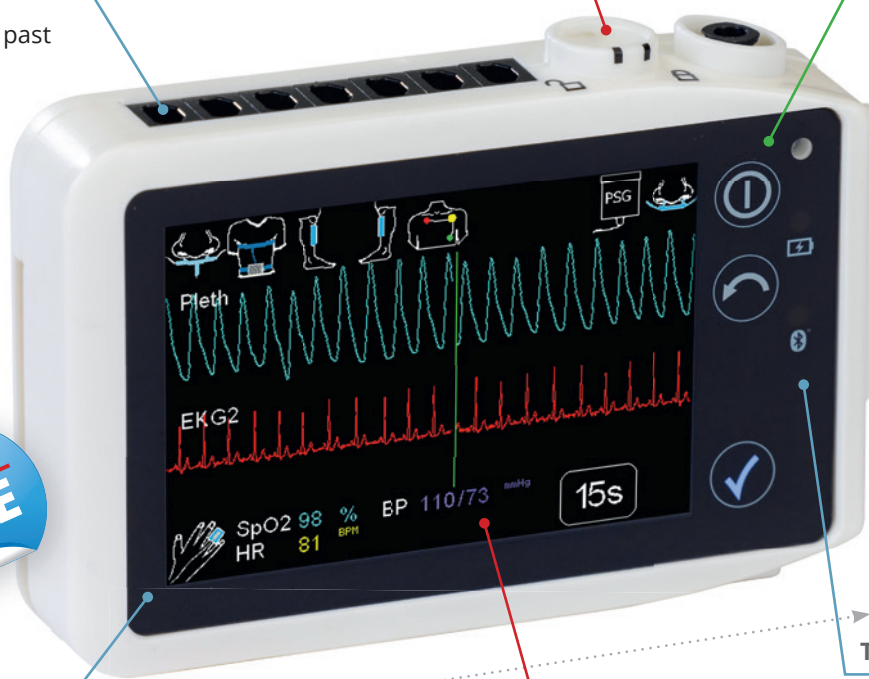
One device fits all, allowing ambulatory & stationary applications

### Cuffless, beat-to-beat blood pressure measurement

A new era in measuring blood pressure in a sleep laboratory – with no sleep disturbances

### True wireless technology

Real-time, wireless data transmission. Wireless sensors available for patient comfort and mobility



74 mm

110 mm

# FEATURES

The future has arrived – our most powerful & flexible sleep polysomnograph. Built from over 20 years of experience as thought-leaders in sleep diagnostics. Delivering results and features that will exceed your expectations.

## Supreme Signal Quality

- ◆ Up to 4 kHz sample rate per channel
- ◆ Unique active sensor technology
- ◆ Up to 24 bit resolution for EXG channels
- ◆ Excellent signal-to-noise ratio
- ◆ Continuous impedance recording



## HD Touch Screen

- ◆ Start the data recording on the device
- ◆ Bio-calibration at bedside
- ◆ Signal check on the screen
- ◆ Intuitive interface with gesture control
- ◆ Zoom to a selectable time base



## Docking Station & Software

- ◆ 90 min fast charge for an 8 h PSG recording
- ◆ Quick data transfer (Approx. 100 s for a full night's study)
- ◆ PC interface – graphic-based control
- ◆ Powerful DOMINO software
- ◆ Semi-automatic and manual scoring available



Video camera  
(optional)

Automatic  
free updates  
for life



Wireless PLM Sensors



## Isn't it time you cut the cables to your PLM sensors?

The SOMNO HD is capable of up to 6 wireless connections, max. 4 PLMs.

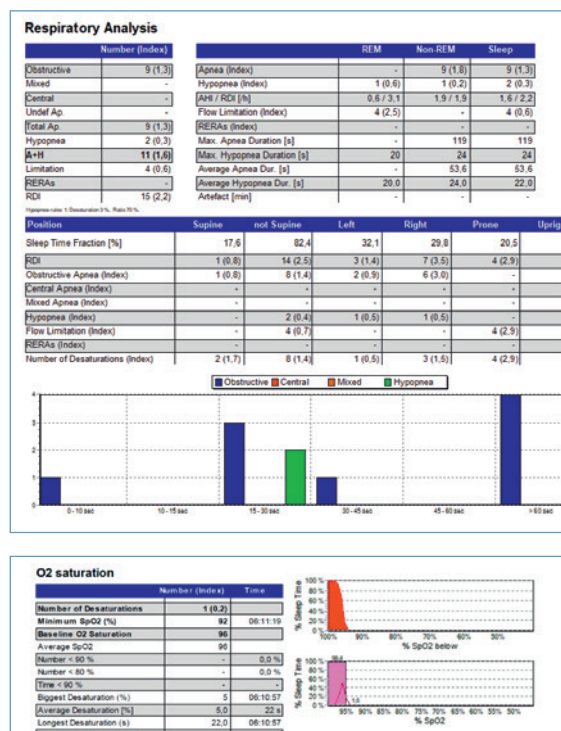
## Intelligent Connect

- ◆ Automatic sensor recognition – no montages required
- ◆ Save time with freely selectable channels
- ◆ Icons help to easily identify connected sensors

## Why use a Wireless Sensor?

- ◆ Outstanding signal quality
- ◆ Time saving application
- ◆ Freedom of movement for the patients
- ◆ Reduction of wear-and-tear on connectors and cables

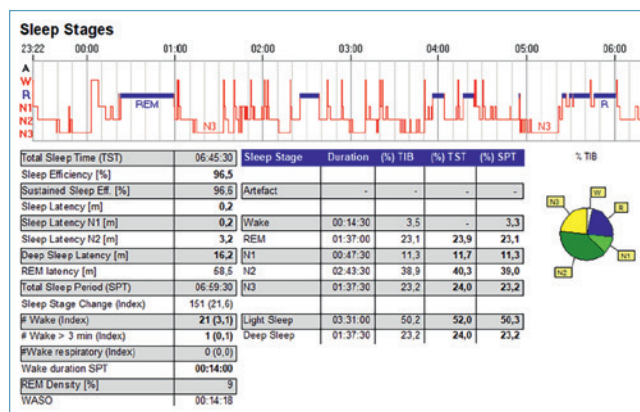
## A small example of the available sleep reports



## Domino Sleep Analysis Software

Not only does it provide all the standard sleep related functions but a staggering array of features and benefits that will suit even the most discerning sleep laboratory.

Visit [www.somnomedics.eu](http://www.somnomedics.eu) for more information.



## Overview



\* not visible

## Technical Specifications

### Data collection

Sample rate up to 4 kHz / channel in device, 1 kHz / channel in headbox, EXG channels with 24 bit resolution, excellent signal-to-noise-ratio (EEG 0.2  $\mu$ V, EMG 0.3  $\mu$ V).

### Data storage / Data transfer

8 GB Micro SD card. Built-in Bluetooth transmitter for wire-less real-time data transfer & recording on PC. Transfer of recorded data on Micro SD via the docking station

70  
Channels

24  
Bit



### Display

Capacitive touch screen with gesture control (480 × 320 pixels)

### Size and weight

110 × 74 × 24 mm, 190 g (incl. battery)

### Power supply

Li-Ion battery (changeable), rechargeable via docking station

### Analysis software:

DOMINO

ANALYSIS & REPORTS

SPECIFICATIONS



## SOMNO HD – PSG Configuration



## EEG options

- ◆ Sleep: AASM or R&K standards
- ◆ Simplified Sleep Staging
- ◆ 32 ch longterm EEG recording

## Paediatrics

A full range of paediatric sensors is available and our DOMINO software offers semi-automatic or manual paediatric analysis.

## Obstructive or central apnea?

With IC EMG - you can now better distinguish between obstructive and central apneas.



## IR video camera options

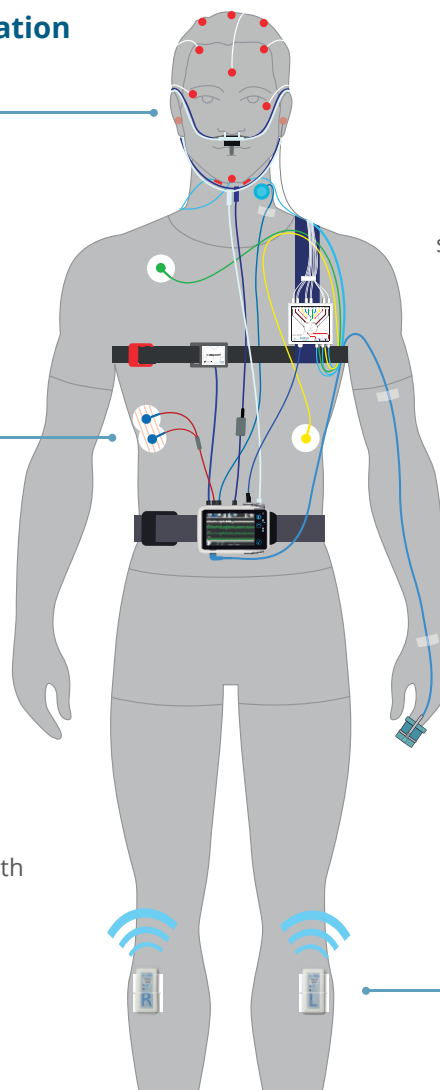
A full range of IR video cameras: both home-based and lab-based video options available.  
Contact us for further information.

## Arousals

Detection of autonomic waking responses by autonomic nervous system responses to sleep disturbance using a plethysmogram signal.

## PLMs

Both wireless & wired versions available.



## SOMNO HD Signal and Sensor Options\*

INTEGRATED	OPTIONAL SENSORS*			
Body position	SLEEP STAGING OPTIONS			
Movement	AASM Headbox – 17 EXG (10 × EEG/EOG, 3 × EMG, 1 × ECG)		Simplified Sleep Staging (Light, 1 × EEG, 2 × EOG)	
SpO <sub>2</sub>	SLEEP LAB SENSOR OPTIONS			
Pulse rate	Thermistor (flow)	Microphone (snore)	1 or 3-channel ECG	2 × PLM sensor
Plethysmogram	Extra EMG	Pneumotachograph	Paediatric sensors	IC-EMG
RIP belt	Activity sensor	Sidestream CO <sub>2</sub>	Transcutaneous CO <sub>2</sub>	Bruxism
Pressure flow	External body position	Second RIP belt		
Snoring via pressure sensor	EEG SYSTEM OPTIONS			
CPAP pressure	EEG Headbox – 32 ch (25 × EEG/EOG, 6 × EMG, 1 × ECG)			Photoc stimulator
Patient marker	ONLINE (IN-LAB) OPTIONS			
Ambient light	Bedside signal check	Wireless transfer to PC	Intercom	
Intelligent power management	Infrared Camera	Pan-Tilt-Zoom Camera (IR)	HD video (IR)	
	EXCLUSIVE TO SOMNOmedics			
	Cuffless, beat-to-beat blood pressure measurement	Up to 6 Wireless sensors (max. 4 PLMs)	Home Sleep Camera (offline video at home)	High frequency snoring
	SPECIAL OPTIONS		RESEARCH ONLY SENSORS AVAILABLE	
	Connect external devices	Integration of CPAP-devices	Contact us for further information	

\* Not all sensors and options are available in all countries. Please check with your local dealer for further information.