

THE EASIEST WAY TO PREDICT THE FUTURE OF SLEEP DIAGNOSTICS IS TO INVENT IT.

Intelligent connect

Automatic sensor & electrode recognition – making montages a thing of the past

Excellent signal quality

PSG System with a maximum of 70 channels, up to 4 kHz/channel, 24 bit EXG resolution

HD touch screen

Allows set-up, bio-calibration & impedance check at the bedside independent of a PC



ACTUAL SIZE

Small & compact design

One device fits all, allowing ambulatory & stationary applications

True wireless technology

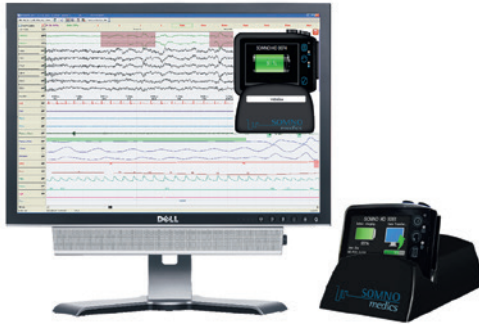
Real-time, wireless data transmission. Wireless sensors available for patient comfort and mobility

FEATURES

The future has arrived – our most powerful & flexible sleep polysomnograph. Built from over 20 years of experience as thought-leaders in sleep diagnostics. Delivering results and features that will exceed your expectations.

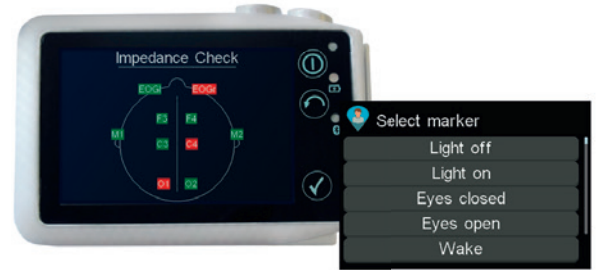
Supreme Signal Quality

- ◆ Up to 4 kHz sample rate per channel
- ◆ Unique active sensor technology
- ◆ Up to 24 bit resolution for EXG channels
- ◆ Excellent signal-to-noise ratio
- ◆ Continuous impedance recording



HD Touch Screen

- ◆ Start the data recording on the device
- ◆ Bio-calibration at bedside
- ◆ Signal check on the screen
- ◆ Intuitive interface with gesture control
- ◆ Zoom to a selectable time base



Docking Station & Software

- ◆ 90 min fast charge for an 8 h PSG recording
- ◆ Quick data transfer (Approx. 100 s for a full night's study)
- ◆ PC interface – graphic-based control
- ◆ Powerful DOMINO software
- ◆ Semi-automatic and manual scoring available



Video camera
(optional)

Automatic
free updates
for life



Wireless PLM Sensors



Isn't it time you cut the cables to your PLM sensors?

The SOMNOScreen® HD is capable of up to 6 wireless connections, max. 4 PLMs.

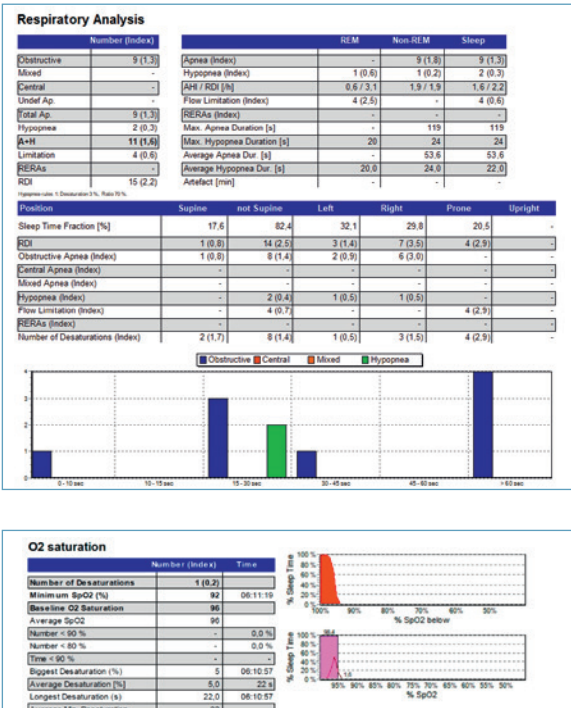
Intelligent Connect

- ◆ Automatic sensor recognition – no montages required
- ◆ Save time with freely selectable channels
- ◆ Icons help to easily identify connected sensors

Why use a Wireless Sensor?

- ◆ Outstanding signal quality
- ◆ Time saving application
- ◆ Freedom of movement for the patients
- ◆ Reduction of wear-and-tear on connectors and cables

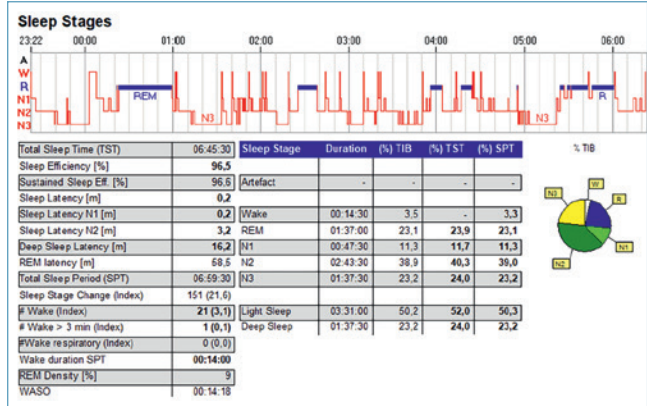
A small example of the available sleep reports



Domino Sleep Analysis Software

Not only does it provide all the standard sleep related functions but a staggering array of features and benefits that will suit even the most discerning sleep laboratory.

Visit www.somnomedics.com for more information.



Overview



* not visible

For adult and pediatric use.
For pediatric use only in a hospital/clinic environment.

Technical Specifications

Data collection

Sample rate up to 4 kHz/channel in device, 1 kHz/channel in headbox, EXG channels with 24 bit resolution, excellent signal-to-noise-ratio (EEG 0.2 μ V, EMG 0.3 μ V).

Data storage / Data transfer

8 GB MicroSD card. Built-in Bluetooth transmitter for wireless, real-time data transfer & recording on PC. Transfer of recorded data on Micro SD via the docking station.

70 Channels

24 Bit



Display

Capacitive touch screen with gesture control (480 x 320 pixels)

Size and weight

4.33 x 2.91 x 0.94 inches, 6.10 oz (incl. battery)

Power supply

Li-Ion battery (changeable), rechargeable via docking station

Analysis software:

DOMINO

SOMNOscreen® HD – PSG Configuration



EEG options

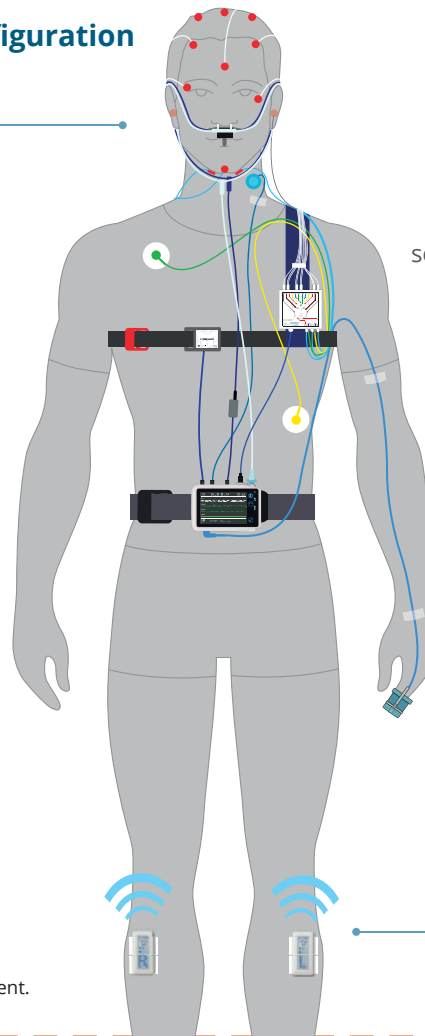
- ◆ Simplified Sleep Staging
- ◆ AASM Headbox (illustrated)
- ◆ 32 ch EEG Headbox

Pediatrics
A full range of pediatric sensors is available and our DOMINO software offers semi-automatic or manual pediatric analysis.



IR video camera options

We offer IR video cameras for home-studies as well as for the sleep laboratory. Contact us for further information.



Arousals

Detection of autonomic waking responses by autonomic nervous system responses to sleep disturbance using a plethysmogram signal.

PLMs

Both wireless & wired versions available.

For adult and pediatric use.
For pediatric use only in a hospital/clinic environment.

SOMNOscreen® HD Signal and Sensor Options

INTEGRATED

- Body position
- Movement
- SpO₂
- Pulse rate
- Plethysmogram
- RIP belt
- Pressure flow
- Snoring via pressure sensor
- CPAP pressure
- Patient marker
- Ambient light
- Intelligent power management

OPTIONAL SENSORS

SLEEP STAGING OPTIONS

AASM Headbox – 17 EXG (10 × EEG/EOG, 3 × EMG, 1 × ECG)	Simplified Sleep Staging (Light, 1 × EEG, 2 × EOG)
---	---

SLEEP LAB SENSOR OPTIONS

Thermistor (flow)	Microphone (snore)	Second RIP belt
2 × PLM sensor	Activity sensor	Pneumotachograph
Transcutaneous CO ₂	Sidestream CO ₂	

EEG SYSTEM OPTIONS

EEG Headbox – 32 ch (25 × EEG/EOG, 6 × EMG, 1 × ECG)	Photoc stimulator
--	-------------------

ONLINE (IN-LAB) OPTIONS

Bedside signal check	Wireless transfer to PC
Pan-tilt-zoom HD camera with integrated IR illuminator and loudspeaker/microphone for 2-way audio	

EXCLUSIVE TO SOMNOmedics

Up to 6 Wireless sensors (max. 4 PLMs)	Home Sleep Camera (offline video at home)
--	---

SPECIAL OPTIONS

Connect external devices	Integration of CPAP-devices
--------------------------	-----------------------------