

THE EASIEST WAY TO PREDICT THE FUTURE OF SLEEP DIAGNOSTICS IS TO INVENT IT.

Intelligent connect

Automatic sensor & electrode recognition – making montages a thing of the past

Excellent signal quality

PSG System with a maximum of 70 channels, up to 4 kHz/channel, 24 bit EXG resolution

HD touch screen

Allows PC independent set-up, bio-calibration & impedance check at the bedside



Small & compact design

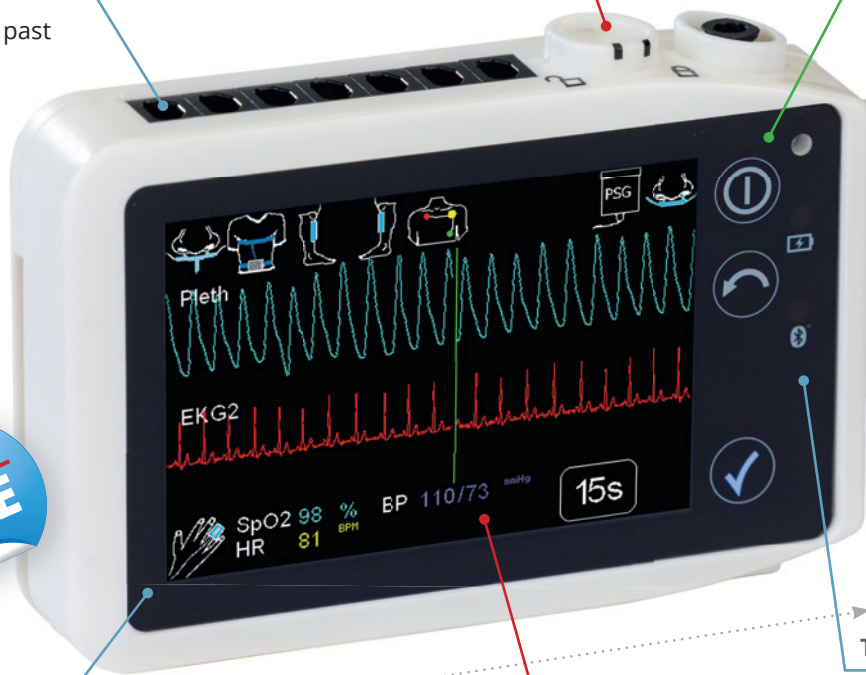
One device fits all, allowing ambulatory & stationary applications

Cuffless, beat-to-beat blood pressure measurement

A new era in measuring blood pressure in a sleep laboratory – with no sleep disturbances

True wireless technology

Real-time, wireless data transmission. Wireless sensors available for patient comfort and mobility



The future has arrived – our most powerful & flexible sleep polysomnograph. Built from over 20 years of experience as thought-leaders in sleep diagnostics. Delivering results and features that will exceed your expectations.

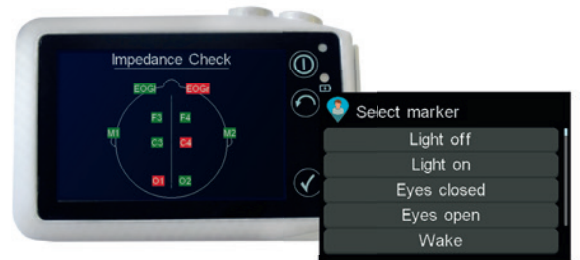
Supreme Signal Quality

- ◆ Up to 4 kHz sample rate per channel
- ◆ Unique active sensor technology
- ◆ Up to 24 bit resolution for EXG channels
- ◆ Excellent signal-to-noise ratio
- ◆ Continuous impedance recording



HD Touch Screen

- ◆ Start the data recording on the device
- ◆ Bio-calibration at bedside
- ◆ Signal check on the screen
- ◆ Intuitive interface with gesture control
- ◆ Zoom to a selectable time base



Docking Station & Software

- ◆ 90 min fast charge for an 8 h PSG recording
- ◆ Quick data transfer (Approx. 100 s for a full night's study)
- ◆ PC interface – graphic-based control
- ◆ Powerful DOMINO software
- ◆ Semi-automatic and manual scoring available



Video camera
(optional)



Automatic
free updates
for life

Wireless PLM Sensors



Isn't it time you cut the cables to your PLM sensors?

The SOMNO HD is capable of up to 6 wireless connections, max. 4 PLMs.

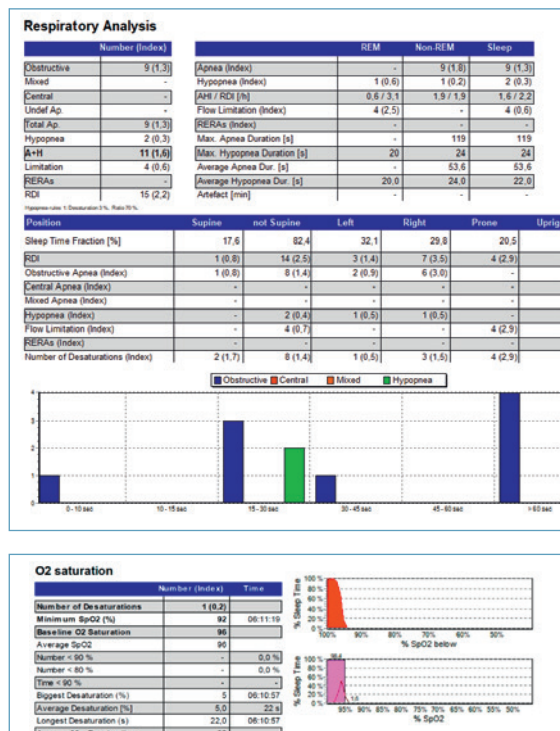
Intelligent Connect

- ◆ Automatic sensor recognition – no montages required
- ◆ Save time with freely selectable channels
- ◆ Icons help to easily identify connected sensors

Why use a Wireless Sensor?

- ◆ Outstanding signal quality
- ◆ Time saving application
- ◆ Freedom of movement for the patients
- ◆ Reduction of wear-and-tear on connectors and cables

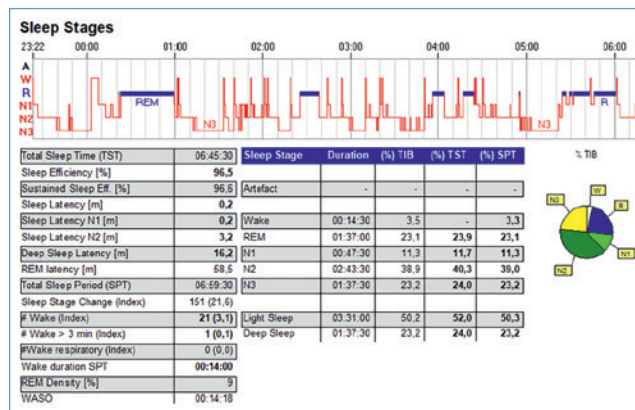
A small example of the available sleep reports



Domino Sleep Analysis Software

Not only does it provide all the standard sleep related functions but a staggering array of features and benefits that will suit even the most discerning sleep laboratory.

Visit www.somnomedics.eu for more information.



Overview



* not visible

Technical Specifications

Data collection

Sample rate up to 4 kHz / channel in device, 1 kHz / channel in headbox, EXG channels with 24 bit resolution, excellent signal-to-noise-ratio (EEG 0.2 μ V, EMG 0.3 μ V).

Data storage / Data transfer

8 GB Micro SD card. Built-in Bluetooth transmitter for wire-less real-time data transfer & recording on PC. Transfer of recorded data on Micro SD via the docking station

70 Channels

24 Bit



Display

Capacitive touch screen with gesture control (480 × 320 pixels)

Size and weight

110 × 74 × 24 mm, 190 g (incl. battery)

Power supply

Li-Ion battery (changeable), rechargeable via docking station

Analysis software:

DOMINO

SOMNO HD – PSG Configuration



EEG options

- ◆ Sleep: AASM or R&K standards
- ◆ Simplified Sleep Staging
- ◆ 32 ch longterm EEG recording

Paediatrics
A full range of paediatric sensors is available and our DOMINO software offers semi-automatic or manual paediatric analysis.

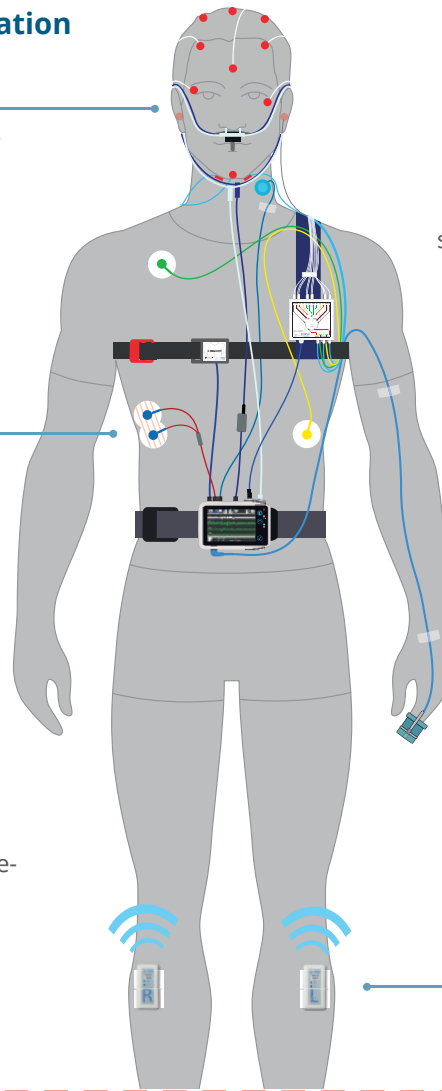
Obstructive or central apnea?

With IC EMG - you can now better distinguish between obstructive and central apneas.



IR video camera options

We offer IR video cameras for home-studies as well as for the sleep laboratory.
Contact us for further information.



Arousals

Detection of autonomic waking responses by autonomic nervous system responses to sleep disturbance using a plethysmogram signal.

PLMs

Both wireless & wired versions available.

SOMNO HD Signal and Sensor Options*

INTEGRATED	OPTIONAL SENSORS*			
Body position	SLEEP STAGING OPTIONS			
Movement	AASM Headbox – 17 EXG (10 × EEG/EOG, 3 × EMG, 1 × ECG)		Simplified Sleep Staging (Light, 1 × EEG, 2 × EOG)	
SpO ₂	SLEEP LAB SENSOR OPTIONS			
Pulse rate	Thermistor (flow)	Microphone (snore)	1 or 3-channel ECG	2 × PLM sensor
Plethysmogram	Extra EMG	Pneumotachograph	Paediatric sensors	IC-EMG
RIP belt	Activity sensor	Sidestream CO ₂	Transcutaneous CO ₂	Bruxism
Pressure flow	External body position	Second RIP belt		
Snoring via pressure sensor	EEG SYSTEM OPTIONS			
CPAP pressure	EEG Headbox – 32 ch (25 × EEG/EOG, 6 × EMG, 1 × ECG)		Photic stimulator	
Patient marker	ONLINE (IN-LAB) OPTIONS			
Ambient light	Bedside signal check		Wireless transfer to PC	
Intelligent power management	Pan-tilt-zoom HD camera with integrated IR illuminator and loudspeaker/microphone for 2-way audio			
	EXCLUSIVE TO SOMNOmedics			
	Cuffless, beat-to-beat blood pressure measurement	Up to 6 Wireless sensors (max. 4 PLMs)	Home Sleep Camera (offline video at home)	High frequency snoring
	SPECIAL OPTIONS		RESEARCH ONLY SENSORS AVAILABLE	
	Connect external devices	Integration of CPAP-devices	Contact us for further information	

* Not all sensors and options are available in all countries. Please check with your local dealer for further information.